

## Early Years Foundation Stage

In the Early Years Foundation Stage, PSHE is referred to as **personal, social and emotional development**. This area of children's learning is concerned with wellbeing – knowing who you are, where you fit in and feeling good about yourself. It is also about developing respect for others, social competence and a positive disposition to learn.



Children will learn to form positive relationships in a setting that supports mutual respect and understanding and that celebrates and acknowledges differences.

With adults as guides and role models, children will learn to develop anti-discriminatory attitudes.

They will be encouraged to gain a knowledge and understanding of their own culture and community to help them develop a sense of belonging and a strong self-image.

Role play is used to help children explore their own culture and appreciate the similarities and differences in those of others.

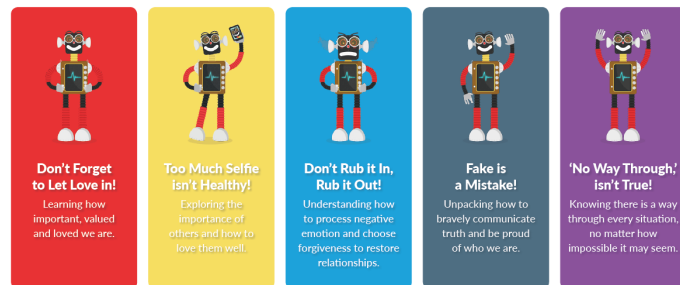
A positive self-image and high self-esteem will be encouraged to give children the confidence to make the most of opportunities, to communicate effectively and to explore the world around them.

Children learn about different kinds of relationships. Being with the same adults and children regularly gives them the time and opportunity to develop relationships that promote social competence.

Children will be encouraged to think about and practise ways of solving problems to help them to feel capable of responding to challenges.

Children will also take part in structured sequences of circle time sessions based around Heartsmart and Commando Joes activities.

### The HeartSmart High Five



# St George's Beneficial C of E Primary School



## PSHE and British Values



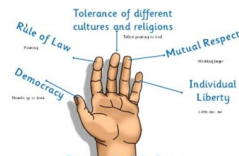
At St. George's Beneficial C of E Primary School we value every child. We want to enhance the lives of our pupils by enabling them to make the most of opportunities inside and outside of school. Our PSHE programme and pastoral support offers experiences for all children to grow up healthily, happily and safely, being able to manage the challenges and opportunities of modern Britain and to be successful citizens,

Personal, Social, Health and Economic (PSHE) Education focuses on developing the knowledge, skills and attributes to keep children and young people healthy and safe and to prepare them for life and work. There are 3 core themes: 'Health and Wellbeing', 'Relationships', and 'Living in the Wider World'.



### We aim to:

- ◆ teach children about friendships,
- ◆ teach children how to stay safe
- ◆ develop children's understanding of positive and safe relationships, including family, friends and online.
- ◆ promote how to treat others: kindness, consideration and respect
- ◆ promote mental and physical wellbeing
- ◆ develop their understanding of the 5 British values.



British Values

### Curriculum

St George's meet the requirements of the National Curriculum and Early Years Foundation Stage. September 2020 PSHE becomes a statutory subject but the core themes are delivered as separate lessons and through our ethos and other subjects. Health and fitness are taught as part of PSHE, Science, PE and Food Technology. RE lessons and collective worship promote moral, spiritual, cultural and social values. Topics themes are about the world and it's people past and present. We use Heart Smart and Commando Joes resources to support our teaching of PSHE. The British values link with each half termly topic. We also encourage children to participate in events outside of school; this includes clubs and enrichment programmes. Many children represent the school in inter school events and festivals including sports, singing, literature quiz to name a few. The School Council are proactive and give the children of St George's a voice. There are representatives from Y2-6 on the council. We also use Thrive to support children with their mental wellbeing.

### Citizenship

Rights and responsibilities form a major part of teaching about citizenship; how we treat others, respecting diversity, taking responsibility for your own actions and why we have rules being vital part of British values.



### Well being

We teach children about a balanced lifestyle: physical health and mental health. This includes keeping safe and making informed choices. At an age appropriate level, children learn facts and risks associated with drugs, alcohol and tobacco.

Recognising feelings in yourself and others is taught through Heart Smart and builds from Foundation Stage to Y6, developing in complexity.

Personal development entails setting goals, overcoming challenges and having aspirations. Learning skills of resilience, confidence, communication, independence and teamwork are developed in the missions from the Commando Joes schemes.

### Sex and Relationships Education

Relationship education is built upon every year, from who is special in our lives to the commitment made by two people in marriage or civil partnerships. SRE develops children's understanding of how their body changes, including at puberty in age appropriateness approach and content. This is handled sensitively, as we are aware that children of the same age may be developmentally at different stages. We consider the appropriateness of whole class and single sex setting at different points in the programme of sex education. Also pupils ask questions pertaining to sex and sexuality which will be judged for age appropriateness and whether if answered these are better dealt with on an individual or small group setting.

You can not withdraw your child from 'Relationships Education' because it is important that all children are taught about friendships and how to stay safe. As a primary school we invite parents of upper juniors to view the materials in advance for some of the lessons on sex education. It is at the discretion of the headteacher if you request your child to be withdrawn from relationships education. However, the science curriculum includes content on human development and reproduction from which there is no right to withdraw.

### Living In The Wider World

As well as the above themes, living in the world includes the importance of respecting and protecting the environment. The part money plays in people lives is also developed as children progress through the school.